



/Creation
/Perfection
/Innovation



產品研發、模具設計、模具製造、塑膠射出、產品檢測、產品組立等一貫作業之公司

MAGITEC®

TZY SHENQ ENTERPRISE CO., LTD.

01-02 Company Origins

03-04 Company History

05-06 R&D / QC

07-08 Mould Dep

09-10 Injection Facilities

11-12 Capacity

13-14 Product Systems

Company Origins

In Aug. 1976, we initiated from a professional plastic mould workshop, CHIH CHANG. In 1983, we increased capital and reorganized to TZY SHENQ ENTERPRISE CO., LTD. And began the work of product design, development and manufacturing.

For more than 30 years, we have constantly engaged ourselves in enhancing mould and plastic injection technology and expanding factory facilities. Moreover, in the recent years through the progression of product quality, the improvement of management policies, and the combination of satellite subcontractors, we actively extend various product systems. We have opened and extended markets in Europe, US, and Japan. As a specialized manufacturer of agricultural machine and leisure & sporting goods, we have admirably won good reputation in the international markets. "Innovation, Excellence, Customer-Orientation, Honest Learning Team" is TZY SHENQ's management philosophy, the most important core values we follow. These traditional core values, the way we survive and stand, drive the leadership and the management of the company to practice with all the company members, and bring us unique corporate vitality and gain a foothold in the international business world.

Obligations to the Environment

Our production process from the equipment employed to components processing (primarily in 3R material like alloy, engineering plastic material, EVA, cold-resistant TPU, and etc), manufacturing, packaging, transportation, and usage, and to waste treatment, recycle and reuse features energy conservation, zero toxic material application, and zero toxic waste emission, in order to reduce negative impact on humans and the environment throughout the entire product life circle. This is basic and inevitable social responsibility and obligation of a company for protecting its employees and the earth environment.

Company Prospects

Our General Manager, Mr. Robert Hung, deeply realizes that in the past several dozens of years, most of Taiwanese companies have gratified with the success of OEM industry, but neglected the importance of innovation and creation of own brands. Recently, while the economic circumstances get worse and worse, along with the threat of low cost but inferior products from the booming areas, like Mainland China and South Eastern Asian countries, Taiwan gradually has been losing the competitive superiority and ability in OEM markets. Lots of OEM companies are compelled to receive the orders in very low prices. The time of high-profit OEM industry nearly comes to an end. With consistent insistence on rooting here in Taiwan, we actively create a productive superiority of high efficiency and high quality but low cost. Meanwhile, we have started the development and promotion of our own brand project. We attempt to not only grab the superiority of setting product styles and selling prices, but also strive for the market leadership. The ambition is the only way to generate company's long lasting vitality and life we believe.



Company Origins

企業起源

至笙企業成立於西元1976年8月。至笙企業的前身是以專業塑膠模具製造為起家的志昌工業社。於1983年增資改組，成立「至笙企業股份有限公司」，並開始從事產品設計開發與生產製造。

30餘年來，我們不斷致力於模具技術增進，塑膠射出及組裝整廠設備擴充。近年來，品質及管理政策提升，加上結合衛星協力廠，積極延伸產品種類及創新，並加強歐、美、日市場的開發與拓展，使我們特別以農機業及休閒運動用品業為專業製造商揚名於國際市場上。

「創新、卓越、顧客導向、實踐以誠為本的學習團隊」是多年來我們所秉持的企業精神，也同時是至笙企業所依循的企業核心價值之所在。這起源於至笙企業優良的歷史傳承之核心價值驅使著企業領導人帶領經營管理團隊及全體員工努力實踐並深切期許使我們得以生存。在國際間展現與眾不同的生命力並占有一席之地。

社會責任

在生產過程中，從加工設備、或是零組件的材料（主要為鋁合金、工程塑膠、EVA、耐寒級TPU）、製造、包裝、運輸、使用、及廢棄物處理、回收、循環再利用的整個過程，均朝向節約能源、不使用與排放有毒原料，製造無毒無害並且和諧的工作環境、並減少整個產品生命週期對人類及環境的影響。這是企業對員工、對地球環境保護所應盡的社會責任及義務。

企業遠景

至笙企業的洪燄楷總經理深深的感受到幾十年來OEM的成功，讓台灣企業普遍忽略了創新研發與建立品牌的重要性。近幾年來，隨著大環境的惡劣，加上大陸、東南亞等製造成本低廉的低品質新興地區威脅，台灣已經喪失了部分OEM的競爭，不少代工大廠被迫流血接單，代工業的高獲利時代已然結束。

然而我們堅持根留台灣，以積極創造高效率、高品質、低成本的生產優勢做為我們的經營理念。並著手從事品牌推展計劃與行動，以握有訂定產品規格與價格的優勢，爭取市場主導性。唯有如此才能使企業產生生命的延續力與永續經營。

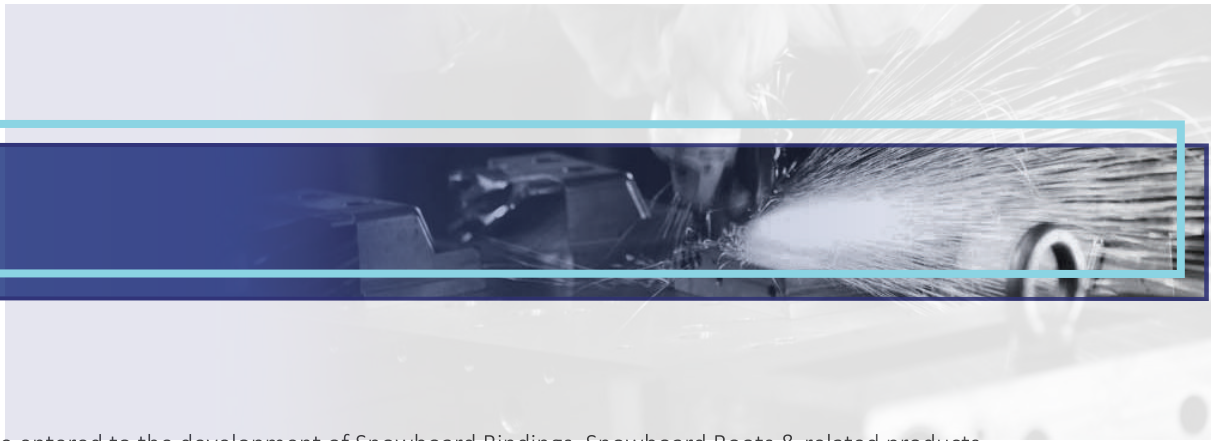
/Perfection
/Innovation

Company History

- 1976** The 1st mould workshop, CHIH CHANG Mould Workshop, was initiated.
(Capital: NTD 500,000; Employees: 8 people)
- 1978** Enlarged TZY CHANG Mould CO., LTD. was established for exporting moulds. Plastic injection factory was established and OEM with local trading companies. (Capital: NTD3, 000,000; Employees: 16 people)
- 1980** Assembly facilities were installed. (Capital: NTD6, 000,000; Employees: 26 people)
- 1983** We reorganized to TZY SHENQ ENTERPRISE CO., LTD. Began design, development and production of plastic goods. (Capital: NTD 12,000,000; Employees: 36 people)
- 1986** Taipei office was installed to reinforce the relationship and the service for local traders & overseas customers.
- 1987** LI CHYUAN CO., LTD. was established for the purpose of producing high precision moulds. We started the cooperation with Japanese "KAAZ", specializing in Electric Power Garden Tools. We cooperated with Japanese "COMBI", in developing baby strollers.
- 1989** We cooperated with Japanese "KYODO" in producing high-quality moulds and plastic injection parts, like components for architectural machine and photonic equipment.
- 1992** OEM with LBA Company for in-line skate manufacturing & Snowboard Bindings development.
- 1993** We increased new equipment and new building. We cooperated with Japanese "ARIMITSU", "KAAZ", "KYODO", specializing in production of electric power agricultural/garden tools.
(Capital: NTD26,000,000; Employees: 48 people)

公司沿革

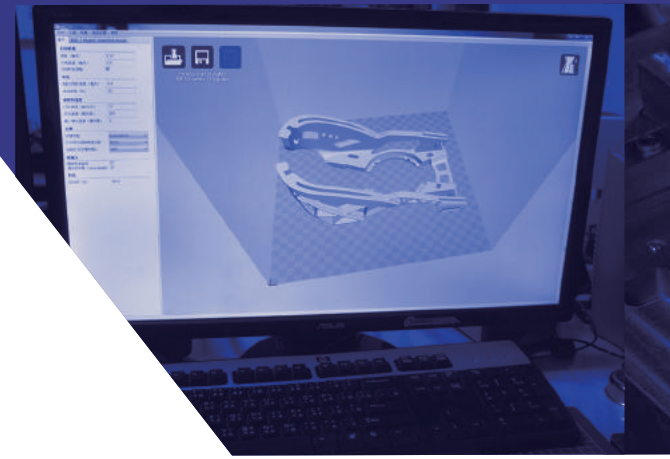
- 1976** 成立模具廠 - 志昌工業社 (資本額NT50萬元; 職員工人員數: 8人)
- 1978** 擴大規模並成立「至昶模具有限公司」, 出口模具。成立塑膠射出工廠並與當地貿易公司合作OEM塑膠製品。(資本額增資為NT300萬元; 職員工人員數: 16人)
- 1980** 設置組裝生產線。(資本額增資為NT600萬元; 職員工人員數: 26人)
- 1983** 改組為「至筌企業股份有限公司」, 從事自有產品設計之開發與生產製造。
(資本額增資為NT1200萬元; 職員工人員數: 36人)
- 1986** 成立台北辦事處, 加強與客戶間的服務。
- 1987** 成立「筌詮企業股份有限公司」增設「CNC加工機、3D設計軟體」, 專業生產製造高精密的模具製品。與日本「凱姿」株式會社合作生產引擎農業機具。與日本知名公司「COMBI」共同設計開發四輪嬰兒車。
- 1989** 與日本「協同」株式會社合作, 製作高品質模具及塑膠製品如大型建設機具配件, 洗相機配件等。
- 1992** 與LBA公司合作製造直排輪與雪板雪鞋架。
- 1993** 新增設備。新廠啟用。日本公司「ARIMITSU」「KAAZ」「KYODO」等委託代工電動及引擎農業機具產品。(資本額增資為NT2600萬元; 職員工人員數: 48人)



- 1994** We entered to the development of Snowboard Bindings, Snowboard Boots & related products.
(Capital: NTD 32,000,000; Employees: 65people)
- 1996** We mass produced and exported Snowboard Bindings to Japan & North USA, and obtained a good reputation.
- 1998** OEM Switzerland famous snowboard company, "Nidecker", in developing and manufacturing Snowboard Bindings & accessories.
- 2003** French riders used our product (PHA-1010) and won the GOLD MEDAL & BRONZE MEDAL.
- 2003** Our snowboard Bindings won the 12th National Silver Award of Excellence.
- 2004** We cooperated with the international brand "Rossignol" in Snowboard Bindings OEM business.
- 2005** We set up China office in Dong Guan area in order to serve more customers and to control Snowboard Boots quality and delivery.
- 2005** We enlarged and built new factory building with smooth assembly line and second process areas.
(Employees: 88 people)
- 2007** Awarded the prize "Gold Maker" of the Best Small and Medium Enterprise of Taichung County.
- 2010** We entered to the development of Wakeboard Bindings.
- 2012** Renew one 250T plastic injection machine.
- 2014** Capital: NTD72,000,000; Employees: 90 people
- 2015** Renew two 125T plastic injection machines.

- 1994** 正式投入研究開發設計滑雪板固定架、雪靴及周邊商品。
〔資本額增資為NT3200萬元；職員工人員數：65人〕
- 1996** 雪鞋架大量輸出日本與北美洲，打響國際。
- 1998** 與瑞士知名品牌「Nidecker」OEM合作，製造雪鞋架及零配件。
- 2003** 獲選為法國雪板選手指定產品〔PHA-1010〕並贏得金牌與銅牌殊榮。
- 2003** 榮獲第十二屆台灣精品獎並入圍國家產品形象獎獲得銀質獎，產品設計與行銷更趨國際化。
- 2004** 與國際知名品牌「Rossignol」合作從事OEM雪鞋架製造。
- 2005** 於大陸東莞長安設置大陸辦事處，提供更多中國製產品選擇與控制品質及交期。
- 2005** 新廠擴建。設置更順暢的組裝線及二次加工設備場地。
〔總職員工人員數：86人〕
- 2007** 獲頒台中縣96年度績優中小企業-金手獎的殊榮。
- 2010** 正式投入研究開發設計滑水鞋產品。
- 2012** 設備更新1台250噸塑膠模具射出機。
- 2014** 資本額增資為NT7200萬元；職員工人員數：90人
- 2015** 設備更新2台125噸塑膠模具射出機。

R & D / QC



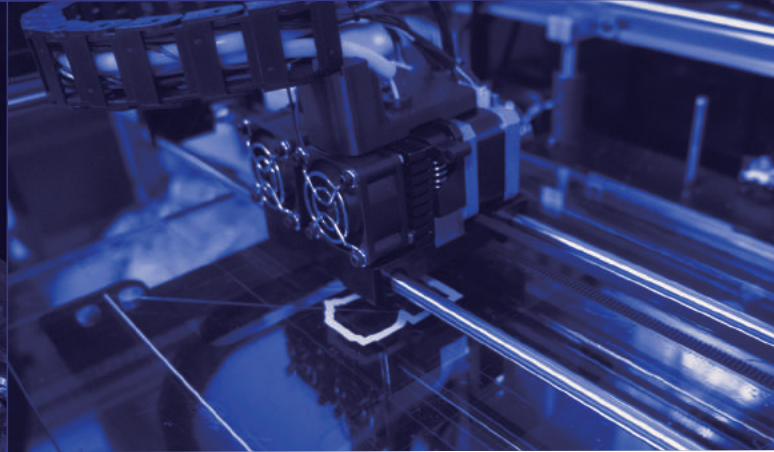
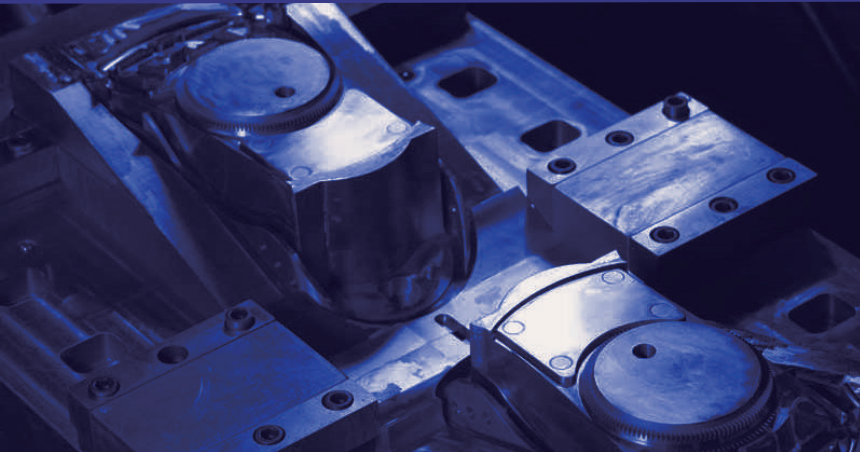
R & D

We continuously reinforce the R&D system and its integration as: Market Analysis → Postulated Competitors' Product Analysis → Product Positioning MAP Analysis → Design Condition Finalization → Design Idea Sketch → Rough Sketch → 3D Graphic → CAE Mould Flow Analysis → Product Human Interface Structure and Mechanic Review with Structure/ Production/ Biotech/ Marketing personnel → 3D Model Graphic Assembly → BOM File Construction → Mock Up (RP or SLA) → Parts and Components Mould Trial → Simple Trial Production → Testing and Correction Process → SOP, SIP Standardized Operations. The goal of integrated R&D system is to shorten working processes, to reduce production cost, to optimize product quality and to raise market competitive ability. Besides enhancing self R&D abilities, we cooperate with industrial colleges and related governmental organizations in project co-development. We engage in innovation of various products in order to expand our business to different industries and to provide more choices for existing and future customers.

Quality Control

Fine Quality is TZY SHENQ's consistent insistence and commitment to our customers. With all efforts and strives, we have achieved the qualification of ISO 9001-2000 and quality certification of German TUV and Japanese JQA. Except strict quality control and testing process and the increase of inspection devices, we insist on quality policies of good quality guarantee, product standardization and specialization, assurance to consumers' rights, to provide products in stable quality and to meet all the customers' inspection requirements.





研究開發

至笙企業不斷強化研發流程制度的整體性：市場環境分析→競爭者做為假想敵產品分析→產品定位MAP分析→確定設計條件→設計Idea Sketch→Rough Sketch→繪製產品3D圖→模流CAE分析→與結構/生產/生技/行銷人員檢討產品人因介面結構與機能→繪製3D模型圖/零件組立圖→BOM檔案建立→手工模Mock Up(RP or SLA) →零組件試模→樣品試作→產品測試、修正作業→作業標準書、檢查基準書等標準化作業。目的即在於縮減製程，降低成本，優化產品品質，以提升市場競爭力。培養自主研發能力之外，我們同時與學術單位產學合作，與研究機構配合專案開發，投入多樣化產品創新與改良，將市場拓展延伸至不同領域，提供客戶更多選擇。

品質控管

品質是至笙企業對客戶堅持不變的承諾。多年來的努力，我們已獲得ISO9001-2000、德國TUV、日本JQA品質認證資格。除了嚴格執行品質及測試流程、擴充檢測儀器治具，我們堅持以品質保證、產品標準化、規格化保障市場消費者權益的品質政策，提供品質穩定、達到客戶各項檢驗要求的產品。

研發設備及實驗室

Testing Devices

衝擊測試機	Impact Testing Machine
萬能模擬測試機	Snowboarding Simulation Testing Machine
扭力測試機	Torsion Testing Machine
色差計	Colorimeter
拉力測試機	Tension Machine
水分檢測儀	Moisture Analyzer
冷凍庫	Celsius Fridge
馬達測試機	Engine Tester
芭扣彈簧疲乏測試機	Buckle Spring Fatigue Testing Machine

產品研發



模具設計



模具製造



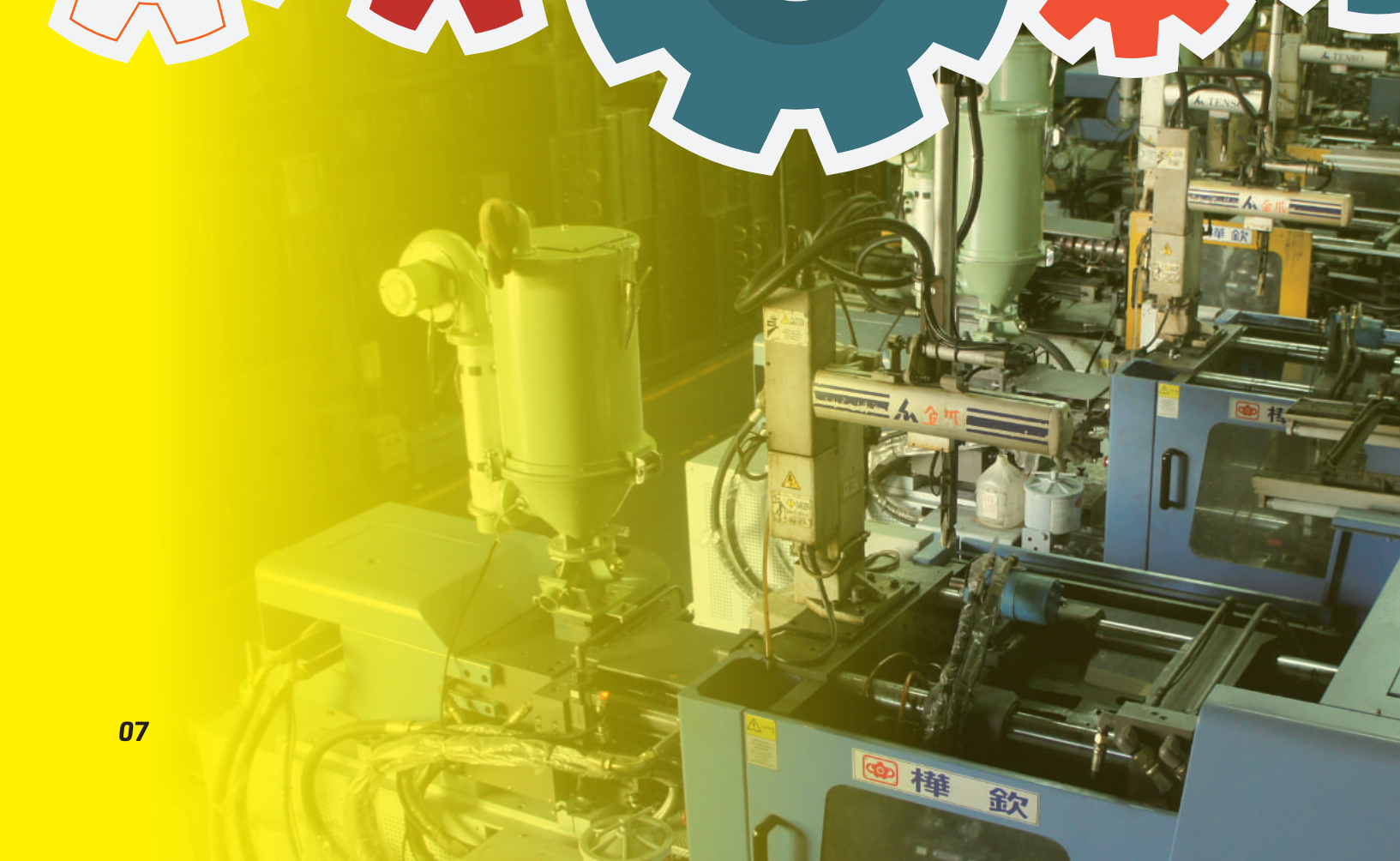
塑膠射出



產品檢測



產品組立



Mould Dep.

Mould is the mother of plastic injection. Mould is also the proud origin of TZY SHENQ. By utilizing high precision working machine and 3D software (such as CATIA and UG), and improving manufacturing technology, along with the application of CAE mould flow analysis, we efficiently shorten the overall development and production time, effectively reduce production cost and produce fine and durable plastic injection moulds.

Mould Equipment

- CNC general cutting milling machine --- 2 sets
- Electronic discharge machine --- 1 set
- #5, #2 milling machine --- 4 sets
- Overhead traveling crane --- 2 sets
- Lathe --- 1 set
- Computer device --- 5 sets
- Upright drilling machine --- 1 set
- 3D program control software --- 3 sets (UG, CATIA, and CIMATRON)
- Surface grinding machine --- 1 set
- 2D application software --- AutoCAD

Mould Dep.

模具部

模具為塑膠射出之母，同時也是最引以為傲的企業起源。我們引進高精密度設備，提升模具製造技術，應用模流CAE分析技術，縮短整體開發時程、降低成本，製造出精密而高耐用性的塑膠射出模具。

模具部設備

- CNC精密綜合切削機 --- 2台
- 放電加工機 --- 2台
- #5、#2銑床 --- 4台
- 3&5噸吊車 --- 2台
- 車床 --- 1台
- 電腦設備 --- 5組
- 直立鑽孔機 --- 1台
- 3D程式製作軟體(UG,CATIA,CIMATRON等) --- 3組
- 平面研磨機 --- 1台
- 2D應用軟體 --- AutoCAD

Injection Facilities

塑膠課

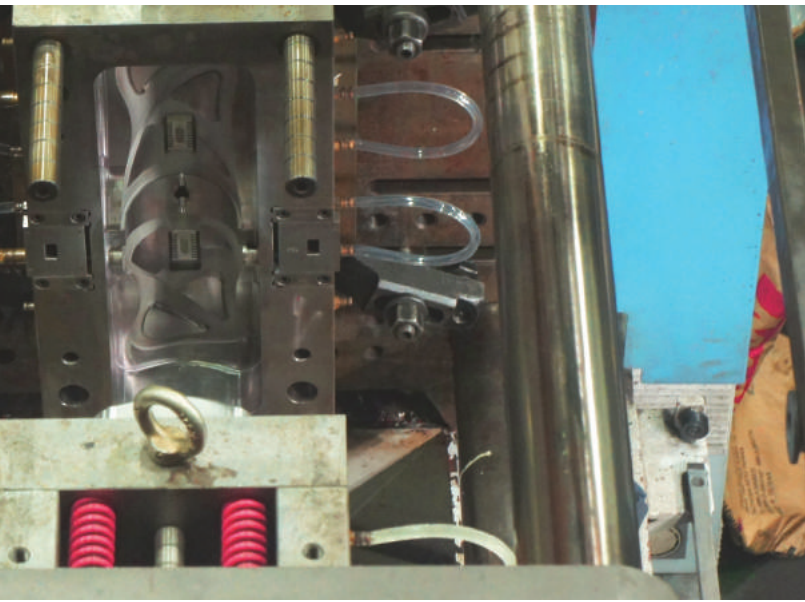


To emphasize the application of engineering plastic material, we install material Dehumidifier, Hopper Dryers and Mold Temperature Controllers and Auto In-Feed System, in order to stabilize injection quality. We set up Robot Arms, in order to provide a safer process environment and to advance injection capability. Primarily, the plastic injection machines we have allocated now are from size 125 ton to 1360 ton. These could response to the plastic product need from as small as plastic washers to as large as engine covers of architectural machine.

Robot Arm --- 8 sets
Mold temperature controller --- 7 sets
Hopper Dryer --- 33 sets
Forklift --- 4 sets
Mixer --- 3 sets
Overhead traveling crane --- 4 sets
Crusher --- 11 sets
Conveyer --- 3 sets
Vacuum loader --- 12 sets
Dehumidifier --- 5 sets
Saw machine --- 1 set
Drilling machine --- 2 sets

Plastic injection machine (125ton) --- 2 sets
Plastic injection machine (150ton) --- 2 sets
Plastic injection machine (210ton) --- 1 set
Plastic injection machine (250ton) --- 1 set
Plastic injection machine (300ton) --- 2 set
Plastic injection machine (350ton) --- 1 set
Plastic injection machine (450ton) --- 1 set
Plastic injection machine (600ton) --- 1 set
Plastic injection machine (1360ton) -- 1 set





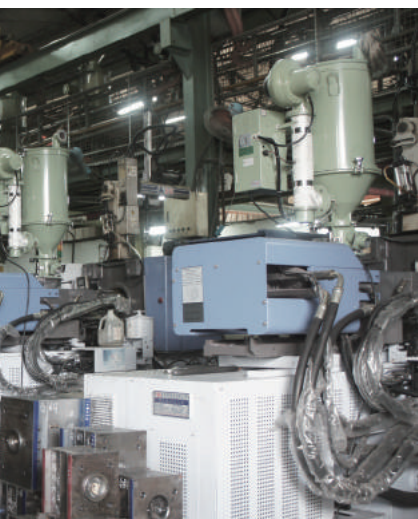
為因應特殊工程塑料射出之應用，我們採用原料除濕乾燥設備、模溫機及自動中央供料系統，穩定射出製品品質。裝設自動機械手臂，提供安全作業環境、增進塑膠射出產能。目前廠內所配置之射出成型設備由125ton~1360ton，可回應小從塑膠華司，大至建築機械引擎蓋的產品規格需求。

塑膠射出機(125噸) --- 2組
 塑膠射出機(150噸) --- 2組
 塑膠射出機(210噸) --- 1組
 塑膠射出機(250噸) --- 1組
 塑膠射出機(300噸) --- 2組

塑膠射出機(350噸) --- 1組
 塑膠射出機(450噸) --- 1組
 塑膠射出機(600噸) --- 1組
 塑膠射出機(1360噸)---1組



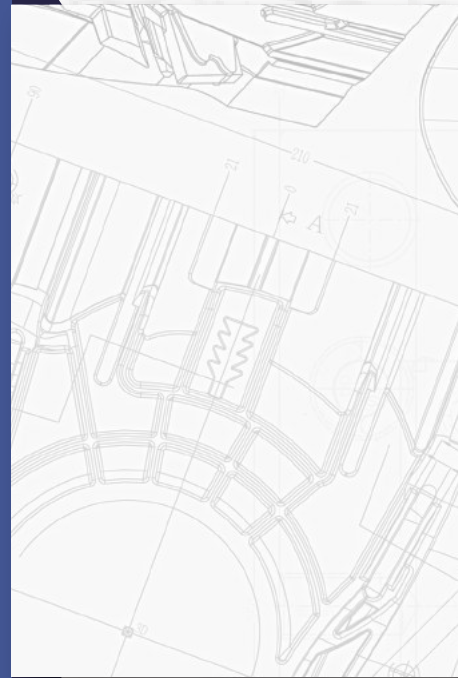
自動機械手臂 --- 8組
 模溫機 --- 7組
 原料乾燥機 --- 33組
 堆高機 --- 4組
 混料機 --- 3組
 天車(吊車) --- 4組
 粉碎機 --- 11組
 輸送帶 --- 3組
 抽料機 --- 12組
 除濕乾燥機 --- 5組
 鋸床 --- 1台
 鑽孔機 --- 2台



***/Creation
 /Perfection
 /Innovation***

Capacity

Fine products in high quality and high proficiency come from the integrated operation of design and development, mould manufacturing, plastic injection, quality control and product assembly, together with the long-termed cooperation with satellite subcontractors (such as stitching, painting, printing, hardware... etc), with whom we already have mutual working tacit. Furthermore, the technical exchange, communication and cooperation with industrial colleges and governmental organizations are also one of the keys to the achievement of such improvement. Professional and harmonious assembly and process environment, along with complete warehouse management system, provides averagely capacities of assembling 30,000 pairs Snowboard Bindings, or 5,000 sets Electric Lawn Mowers and 3,000 sets Fertile Power Sprayers every single month.



產能

高品質、高效率的精緻化產品來自於至笙企業在設計開發、模具製作、射出成型、品質管制、乃至組裝成品上的一貫化作業之加工作業流程，與衛星協力廠（如塗裝、針車、印刷、五金...等）長期配合默契、及與學術機構與研究機構產學合作及技術交流的成果。專業及和諧的組裝作業環境、完整的進出貨倉儲管理系統，提供了平均每月組裝30,000雙滑雪板固定架或5,000台電動割草機及3,000台肥料噴霧機的產能。



Product Systems

TZY SHENQ is a customer-oriented company. We do our best effort to satisfy customers' needs. In this industrial world full of harsh competition and cost increasing, we dedicate the creation and innovation of delicate product to win orders and to obtain the senses of identification and confidence from the customers. TZY SHENQ has full experiences in mould manufacturing and plastic injection producing, especially in the application of PA+GF, PBT, POM, PC, TPE, PP+GF, and so on. Starting from the professional technical knowledge of mould and plastic injection, we are able to develop diversified moulds and plastic product systems:

High precision moulds

High quality plastic injection components



高精密模具專業製造

高品質塑膠零件射出



High efficiency agricultural/garden tools

High fine leisure sporting goods

產品體系

至笙企業以客戶導向，全力滿足客戶需求為原則，在日益激烈的競爭、成本高漲的惡劣環境中，以精緻化產品的創新與改良，爭取訂單獲得認同與信賴。至笙企業在各類工程塑膠，如PA+GF、PBT、POM、PC、TPE、PP+GF、ABS、PP、PA、PU等模具製造與射出成型的應用上具有豐富的經驗。以模具及塑膠射出的專業技術出發，我們有能力發展各式多樣化的模具及塑膠產品體系：

高效率農業機械產品專業研發與製造

高精緻休閒運動用品專業研發與製造



TZY-SHENG
至笙

MAGITEC®

TZY SHENQ ENTERPRISE CO., LTD.

至笙企業股份有限公司
411台中市太平區永平路二段476巷75號

No. 75, Lane 476, Sec. 2, Yung Ping Rd.,
Taiping Dist., 411 Taichung City, Taiwan,
R.O.C.

Tel: 886-4-2273-7750

Fax: 886-4-2270-6446

Website: <http://magitec-tzy.com>

E-mail: info@magitec-tzy.com

